

Cannon Close Raynes Park, SW20 9HA

£850,000 Freehold



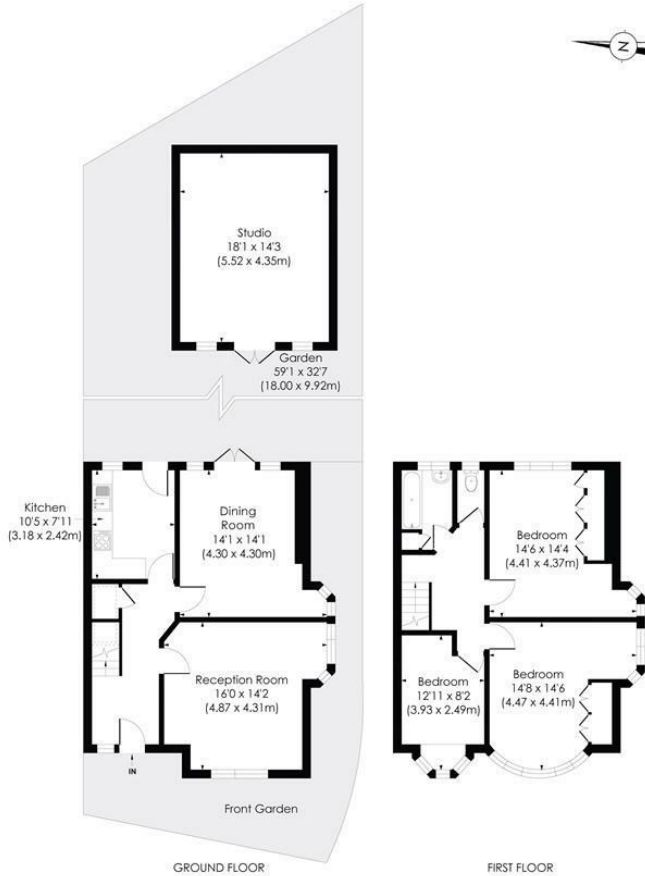
This fantastic THREE DOUBLE BEDROOM, unextended 1930s End of Terrace "Blay" House is positioned on an enviable plot that offers significant opportunity to heavily extend to the loft, rear and side (s.t.p.p). Set at the end of a desirable cul-de-sac close to Raynes Park High Street, Station and the open space of Cannon Hill Common. This is an ideal blank canvas for an incoming buyer to move into and create an exceptional home. There is also off street parking to the front, a fantastic 59ft rear garden with side access, two good sized reception rooms with unique dual bay windows, a separate kitchen and a neutrally decorated bathroom. Offered to the market with no onward chain.

CANNON CLOSE, SW20

Approx. Gross Internal Floor Area

1422 Sq. ft/132.13 Sq. m (Incl Studio)

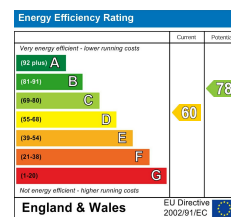
1164 Sq. ft/108.12 Sq. m (Excl Studio)



This floor plan has been prepared for the purpose of illustration only in accordance with the latest RICS code of measuring practice and is not to scale. All measurements and areas are approximate and whilst every effort has been made to ensure the accuracy of the plan contained here, no responsibility is taken for any error, omission or misstatement.



- Three Double Bedroom - 1930s "Blay" House
- End Of Terrace on an Envious Plot
- Potential to Extend to the Loft Rear and Side S.T.P
- Desirable Cul-De-Sac - Close to Cannon Hill Common
- Close to Raynes Park Station and High Street (0.5 Miles)
- Superb 59ft Rear Garden
- Off Street Parking To Front
- No Onward Chain
- EPC - D
- Council Tax Band - D



For Free Mortgage Quote and Best Mortgage Rates, call Ellisons Mortgage Advisor on 0208 944 9595



Although these particulars are believed to be correct, their accuracy is not guaranteed and they do not form part of any contract.

Celebrating 30 years of successful Sales and Lettings in Merton

